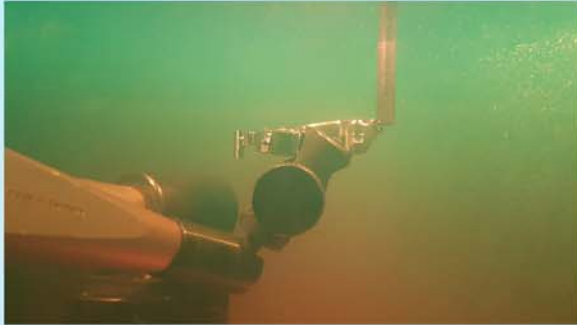


MB[®] EDM MB-1



- * Compact construction with external dielectric- and filter unit
- * Newest digital generator technology with MOSFET
- * Polishing circuit for polished surface
- * DC Driver in the Z axis with digital Fuzzy Sservo control





Maschinen GmbH

Technical details

Machine

Travel distance X-Axis	150 mm
Travel distance Y-Axis	100 mm
Travel distance Z-Axis	200 mm
Distance table to collet	20-230 mm
Table size	200x130 mm
Working tank	300x250x170 mm
Filling height of working tank	190 mm
max. weight of workpiece	50 kg
max. weight of electrode without rotation	2,5 kg
Machine weight	135 kg

Generator

Impulse generator	20 AMP
Power capacity	1,5 kVA
Input power	230V
Frequenzy	50/60 Hz
Genarator weight	55 kg

Filter unit

Capacity with filter tower	45 Liter
Pumping capacity	10 l/min
Input power	230V
Filter space	0,6 qm
Weight of filter unit	30 kg
Total weight of the machinery with filling	260kg
Space required	1000x700 mm

Standard equipment

3 axis digital read out
Rotation spindle 0-500 U/min adjustment
Capacitor for special materials
Quick clamping MB
Collet holder (1-10 mm)
Acoustical edge control
Pinol clamp with rotary cut-off
2 working lights

Autom. change of polarity
Working times 1-999 msec.
Spark pause times 1-99 msec.
HV sparking voltage
99 working parameter memory
3 Polishing stages can be switched manually
Lift off speed programmable
Lift off distance programmable

Options

RS 232 for external of the display and for data input
Special electrode- and workpiece holder
Magnetic table

EDM MB-1

Spark Erosion Machine